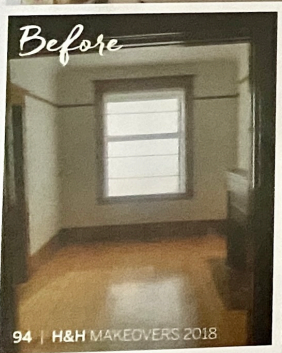


SISTER STYLE

A shared love of colour was the inspiration behind the stylish apartment Kai Ethier created for a special client: her sister Eden.



94 | H&H MAKEOVERS 2018



Text by Ceri Marsh | Photography by Ashley Capp

"I like to make a statement," says House & Home design editor Kai Ethier (right). "Decorating shouldn't be too serious." Luckily, the tenant she was designing for, her sister Eden Buss (left), agrees. Creating a canopy of white on the curved ceiling of this small sitting room balances the showstopping wallpaper. Every element in the space works to keep things light and bright, including a paper pendant, pale rug and trim, modern furniture. **Wallpaper** by Boråstapeter, Brewster Home Fashions; **wallpaper installation** (throughout), Katie's Wallpaper Installation; **pendant** by Jaime Hayon, **white vase** (on mantel), Mjök; **sofa, rug, EQ3**; **drapery**, Hudson's Bay.

FIREPLACE SURROUND
Mossy Oak
(N360-5), Behr.



Before

ABOVE: The previous owners had painted the fireplace a dark brown in an effort to match the living room's dark trim. Kai painted the baseboards and plate rail white to offset the new, bold wallpaper. As for the fireplace, it had already received a fresh coat of paint for an *H&H* photo shoot, before Kai began redecorating the apartment. "I was planning on repainting it, but when we put up the wallpaper, I was like, 'Oh, look at that!'" says Kai. "It looked great." **Trim** colour, *Simply White* (OC-117), Benjamin Moore; **candlesticks**, *Elte*; **mirror**, *ottoman*, **chair**, **coffee table**, **tray**, **teapot**, **white vase**, **planter pots** (in fireplace), *EQ3*.

CREATIVES LOVE TO CALL their work a labour of love. But when *House & Home* design editor Kai Ethier was renovating the rental unit in her Toronto home that she shares with her husband, André, and their two kids, that description truly fit. After all, the future tenant was none other than her younger sister, Eden.

The unit's eccentric English vibe, created with moody paint choices and William Morris-inspired wallpapers, is smartly balanced with clean-lined furniture and light fixtures. "I wanted the apartment to feel like it evolved, as opposed to everything looking like one style," says Kai. "I liked the idea of it having some heritage but with modern aspects."

The sisters agreed that Kai would make the significant decisions, such as creating the new floor plan and picking out appliances. The kitchen shifted from the back to the centre of the unit, starting as a blank slate. The bedroom was moved to the back for added privacy and proximity to the bathroom, and the front room, with its fireplace, made sense for the living room.

When it came time to decorate, Kai and Eden collaborated — their shared love of colour and pattern is on display throughout the apartment. "Painting might not be fun, but it's not rebuilding or renovating and it makes such a huge impact," says Kai. "I always feel like, just go for it! So that's what we did — we went for it."

The result? A charming space that feels feminine, not sweet, traditional yet not at all stuffy. "We shared a bedroom growing up," says Kai. "So I think we come from a similar place in terms of what we like and what we find comfortable."

KITCHEN TRIM
Pigeon (25),
Farrow & Ball.

The decision to leave the pocket door between the living room and kitchen unpainted adds another layer of character to the apartment. "We wanted to keep a bit of the original woodwork," says Kai. "The colour isn't too dark or orangey and it goes well with the tones of the furniture."





KITCHEN CABINERY
Chappell Green (83),
Farrow & Ball.



Before



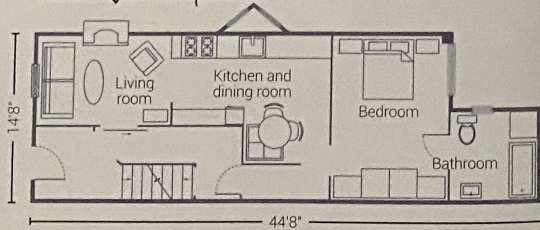
Kai's Tips for WORKING WITH TRADES

WHEN NEGOTIATING WITH YOUR CONTRACTOR, include a clause that says for every week the project runs over schedule, the price goes down.

DON'T START UNTIL YOU HAVE A SOLID PLAN. Know all your choices and your measurements, and have everything mapped out before you begin.

COMMUNICATION IS KEY. Don't assume that anybody knows how you want things. Spell out your choices explicitly and have frequent check-ins as the project progresses.

The floor plan



ABOVE: "I wanted the kitchen to look like it had always been in the house," says Kai. The custom cabinetry was made with old world details such as legs and framed doors (with a small border, as opposed to the frameless cabinets used in most contemporary kitchens). The Silestone counter gives the look Kai and Eden were after — without the expense and fragility of marble. A porcelain apron-front sink completes the vintage vibe. **Cabinetry**, O'Sullivan Millwork; **hardware**, Lee Valley; **sink**, DXV; **faucet**, Grohe; **vent hood**, Broan; **range**, GE; **runner**, Mellah; **tea towel**, blue vase, EQ3.

Photography by Alex Lukey (Kai's portrait)/Floor plan illustration by Esther Flynn



KITCHEN CEILING
Cromarty (285),
Farrow & Ball.

"The wallpaper was my starting point in the kitchen," says Kai. With the ceiling and trim colours coming directly from the floral print, the small dining nook stays open and airy with a glass table, grey chairs and a white pendant that can be swivelled in different directions. **Wallpaper**, Farrow & Ball; **pendant**, table, chairs, dishes, flatware, tea towel, EQ3.



We wanted the apartment to feel like it evolved, as opposed to everything looking like one style. I liked the idea of it having some heritage but with modern aspects



LEFT: Painting the walls, trim and cabinetry in different yet complementary hues created an eccentric vibe that Kai loves. "I really like traditional but not stuffy style — something a little bit playful." She also had built-in storage installed along one wall, since the room — formerly the kitchen — lacked a closet. **Wallpaper** (in bathroom) by Schumacher, Bilbrough & Co.; **basket**, EQ3; **cabinetry knobs**, Lee Valley; **bath fixtures**, DKV.

BEDROOM TRIM
Fair Isle Blue (CSP-715),
Benjamin Moore.

BEDROOM WALLS
Antiqued Aqua
(CSP-703),
Benjamin Moore.

RIGHT: Kai transformed the high-ceilinged bedroom by choosing a deep shade of teal for its bold yet cocooning appeal. "A bedroom should feel cosy," Kai says. "It should be somewhere you want to be." **Bed, nightstand, pink vase, blue linens**, EQ3; **vintage artwork**, Peter Estey Fine Art. **OPPOSITE**: A sliding glass door, which opens onto a small deck, allows sunlight to flood into the room, so Kai decided to double up on drapery. Subtly patterned panels are covered by another set of pink linen drapes, creating a sunset-like effect all day long. **Drapery**, Ikea; **table lamp**, EQ3; **throw**, Cambie Design; **rug**, eCarpetGallery; **large artwork** by Jay Isaac.

